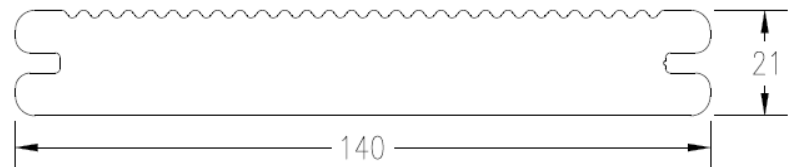
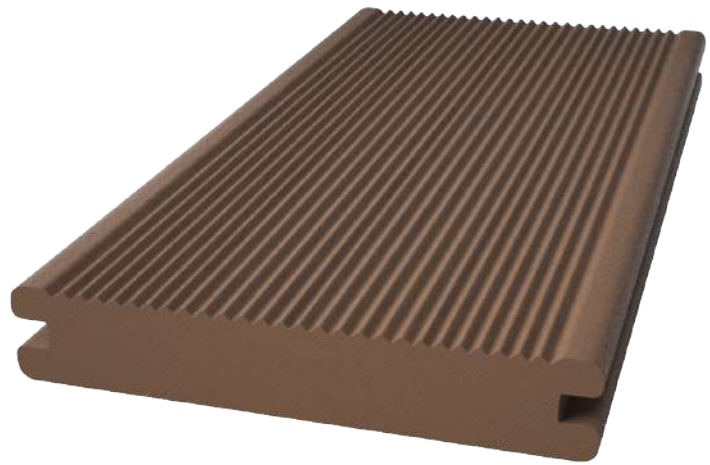


TECHNICAL FEATURES

TECNODECK® FSL



TECNODECK® FSL

DENSITY, EN ISO 1183-1 (g/cm ³)	1,33
WEIGHT (Kg/ml)	3,70 (+/- 5%)
INFLUENCE OF MOISTURE, EN 317	
WATER ABSORPTION (%)	0,30
SWELLING THICKNESS (%)	0,20
CONTENT AND RELEASE OF DANGEROUS SUBSTANCES	Contains no dangerous substances
BENDING STRENGTH, EN 310 (N/mm ²)	28,0
BENDING STRENGTH, EN 789 (N/mm ²) - characteristic value.	22,0
MODULUS OF ELASTICITY IN BENDING, EN 310 (N/mm ²) (Distance between supports 500 mm)	4600
IMPACT STRENGTH, EN 477	
+23°C/1KG	100 cm (9,8J) (no rupture)
-10°C/1 KG	100 cm (9,8J) (no rupture)
THERMAL EXPANSION COEFFICIENT (K ⁻¹)	41,4x10 ⁻⁶
ISO 11359 (-40°C, 80°C)	
SLIP RESISTANCE DIN 4843, PART 100 (Barefoot, dry and wet)	Pass the specifications
FIRE BEHAVIOUR	Not tested

NOTE:

The Technodeck® profiles dimensions have a tolerance of ± 1mm.
These features are only for information purposes, and the manufacturer may change them without previous notice.

v.01/2022